



Issues management is firmly at the core of CPI's activities. Members are kept fully up-to-date with developments by way of consultations, committee participation, newsletters and the CPI website.

Managing Issues through consultation

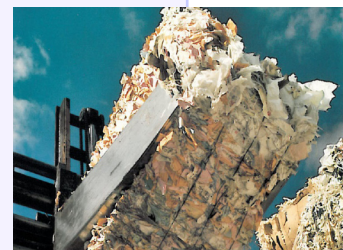
The issues affecting the UK paper industry never stand still and are often complex and global in nature. For example, the environment, recovered paper and forestry present issues that are frequently in the news and often arouse strong reactions.

CPI handles such issues through its Issues Management Committee ("the IMC") comprising representatives from within the industry, supported by CPI senior staff. The aim of the IMC is to help establish a favourable operating environment for our Members, provide a forum for discussion on non-competitive issues and provide information to assist Members in their business.

In seeking to represent the views of the UK paper industry, CPI consults - formally and informally - with Members to fully understand their concerns on each issue. It is through this process of consultation, supported by day-to-day engagement with Members, that CPI is able to present a consensus on issues affecting our industry.

Recovered Paper and Packaging

- Exports of recovered paper
- Waste strategy
- Packaging waste
- Responsible sourcing
- Recovered paper quality



Energy and the Environment

- Carbon reduction commitment
- Carbon Footprint
- Climate change agreements
- Integrated Pollution Prevention and Control (IPPC)
- Energy prices
- EU Emissions Trading Scheme
- REACH



'Corrugated Recycles' Campaign

The entire corrugated industry is encouraged to put the "Corrugated Recycles" logo on every printed corrugated container made in the UK. The campaign is successfully raising awareness of one of the key benefits of corrugated packaging - its exceptional recycling rate.



Food Contact

Paper and board is commonly used for food packaging and the industry takes the matter of food contact very seriously. On behalf of the UK paper and board industry, CPI works closely with the Food Standards Agency and with CEPI (Confederation of European Paper Industries) on food packaging matters.



FACT

Since 1990, the UK papermaking industry has reduced its CO2 emissions by almost 40%