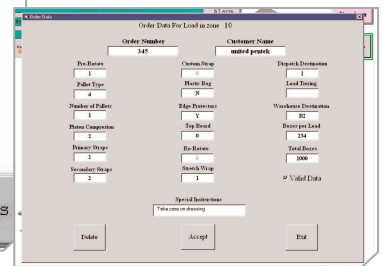
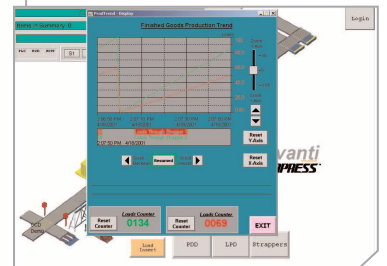
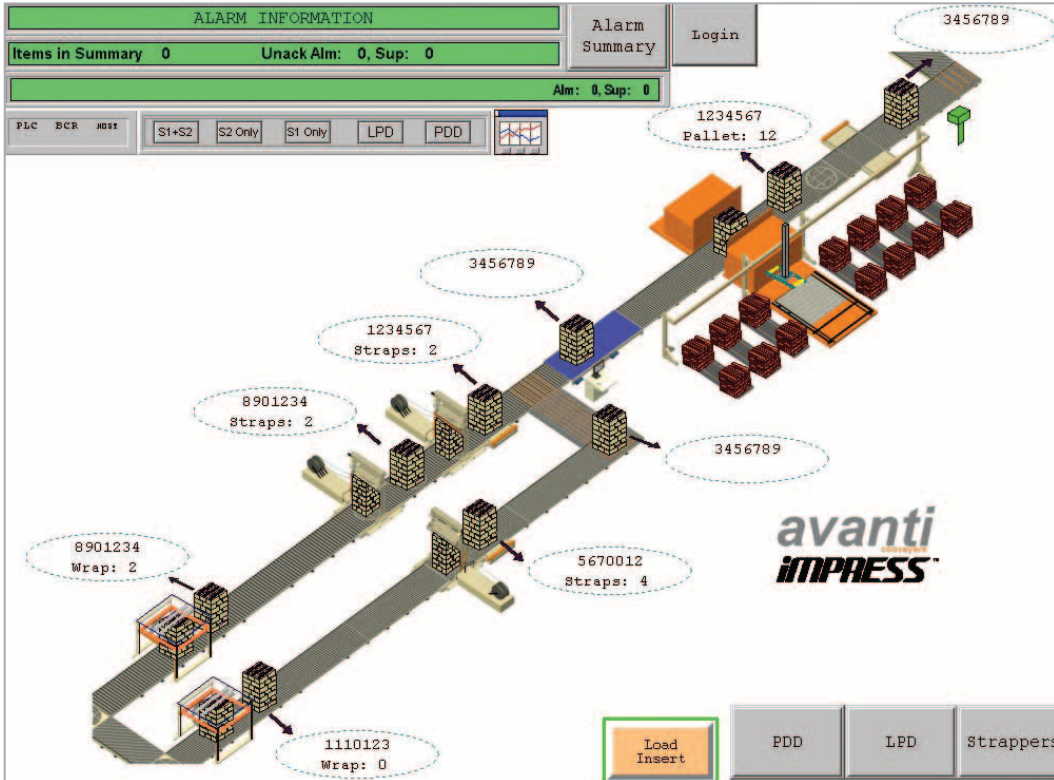


iMPRESS Automated Finished Goods Line

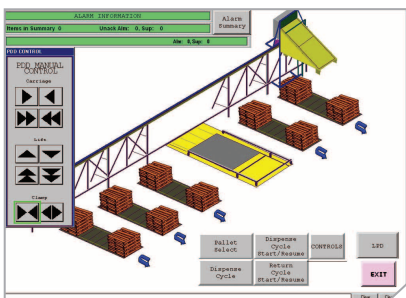
software < products < home



The iMPRESS pallet, Strapping line man-machine interface

- iMPRESS fourth Generation Strapping and Palletising line control system.
- iMPRESS software power to increase the throughput of strapping lines.
- iMPRESS push button controls with an Animated touch screen.

The software is an advanced man-machine interface which includes a database for strap, pallet and stretch wrap specifications. Each load is palletised, automatically strapped and directed to finished goods. The fully animated plant mimic screen provides the link between the sole operator and the complete finished goods line.



< Pallet Robot, Palletising device and strappers are all controlled using simple intuitive touch screen icons. New operator training is simplified.

iMPRESS features

- > 3D User interface shows exactly the machine configuration.
- > Real time animated graphics.
- > Strapper load positioning controls integrated.
- > Touch screen interface.
- > Replaces PLC and push button control systems.
- > On-line help.
- > Trouble shooting - Click on error, a picture of fault appears.
- > Built in diagnostics - to component level.
- > Alarm logging and history recording.
- > Additional workstations may be added.
- > Remote modem support.
- > Optional CCD camera.