

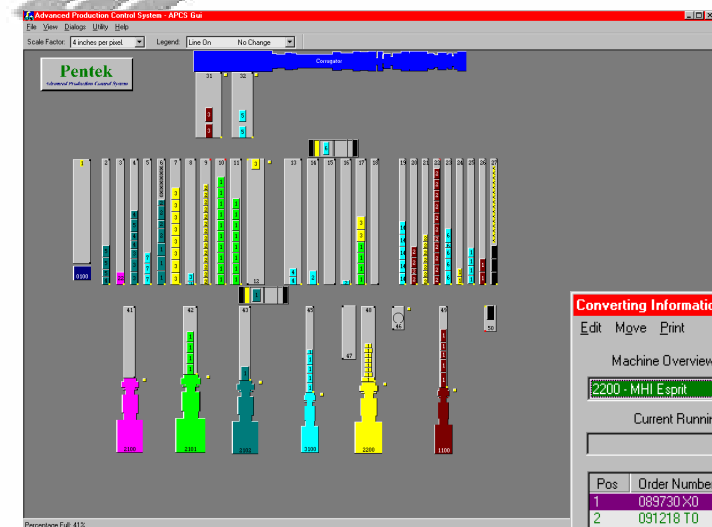
APCS - Computer Integrated manufacturing for Corrugated

The Avanti APCS provides total plant logistic computer control from roll store to truck loading. APCS is a modular integrated system able to be applied for one function or many. APCS can be integrated with existing parts of a total CIM scheme or operate independently providing the ability to grow and develop as the customers own systems are developed or installed.

In a typical application for controlling order flow from the corrugator stacker through to despatch, APCS will control the following functions :-

Optimising the use of the first transfer car by load building on the corrugator take-off, setting dynamic priorities for the car service, directing loads to the best staging conveyor based on the production schedule and best use of conveyor widths and lengths, retrieving loads from staging again with car usage optimisation and dynamic priority car control, delivering to the converting machine infeed conveyors Just-In-Time for the production run, tracking orders through the converting machine discharge system and commanding the pallet insertion, strapping, stretch wrapping and discharge.

Fully integrated with the plant's Sales Order Processing and Scheduling systems APCS gives planners and sales personnel order tracking and count data for real time delivery performance and warehousing inventory control.



Converting Information

Edt Move Print

Machine Overview

2200 - MHI E sprit

Current Running Order Location Current Retrieving Order

Pos	Order Number	Customer Name	Start Date	Start Time	Duration	Status	Order
1	089730 X0	WEETABIX L...	1/23/97	5:10 PM	784:52	Retrieving	Complete
2	091218 T0	WEETABIX L...	3/3/97	10:02 AM	3:58	May Retri...	Complete
3	097120 A0	HOLT_SON...	3/3/97	2:00 PM	2:12	May Retri...	Complete
4	097013 D0	HOLT_SON...	3/3/97	4:12 PM	2:32	Do Not R...	Not run
5	096985 A0	CAPPOQUIN ...	3/3/97	6:44 PM	3:42	Do Not R...	Not run
6	097015 L0	HOLT_SON...	3/3/97	10:26 PM	2:05	Do Not R...	Not run
7	097014 I0	HOLT_SON...	3/4/97	12:31 AM	2:04	Do Not R...	Not run
8	900035 A0	DUMMY FIN...	3/4/97	2:35 AM	5:04	Do Not R...	Not run
9	000210WK1	TBDUMMY ...	3/4/97	7:39 AM	3:09	Do Not R...	Not run
10	096916 A0	HOLT_SON...	3/4/97	10:46 AM	1:40	Do Not R...	Not run
11	094593AM0	BRITVIC SD ...	3/4/97	0:28 PM	0:53	Do Not R...	Not run
12	094670AH0	BRITVIC SD ...	3/4/97	1:21 PM	0:22	Do Not R...	Not run

Notes: W:58.43 L:34.69 S:10156 P:N F:B Notes

Close

APCS Benefits

- ⇒ Reduces Labour
- ⇒ Reduces Waste
- ⇒ Increases Machine Utilisation.
- ⇒ Increases Production
- ⇒ Tracks Orders
- ⇒ Integrates with Production Scheduling
- ⇒ Creates Safe Environment
- ⇒ Creates Hygienic Conditions
- ⇒ Fast Investment Payback

APCS Functions

- Staging Car / Conveyor Control
- Finished Goods Conveyor Control (Plato) with Bar Code Tracking
- Paper Roll Handling with Bar CodeControl
- Corrugator Pallet Label Printing
- Multi-pass Label Printing
- Converting Machine Work Loading
- "Marquee" Overhead Displays
- Interfaces to most Stackers
- Interfaces to Host Computer
- Interfaces to Scheduling Systems
- Windows-NT or QNX (UNIX) Server

APCS Features

- ⇒ Automatic Order Direction
- ⇒ Automatic Order Retrieval
- ⇒ Dynamic Priority Car Control
- ⇒ Multiple order car journeys
- ⇒ Multiple Plant and Office Terminals
- ⇒ Data-Linked to SOP and Scheduling Computers
- ⇒ Windows-NT or UNIX operating Systems
- ⇒ User Accessible Data Base
- ⇒ Accumulating Stack Storage
- ⇒ Automatic Stack Separation
- ⇒ Integrated Stereos, Inks and Dies Delivery
- ⇒ Waste conveying / Control Option
- ⇒ Tracks Manual Intervention
- ⇒ Four Level Fault Back-up System
- ⇒ Optional "Marquee" Large Overhead Data Displays
- ⇒ Optional Label Printers

Technical Specification

- Computers: Pentium II
- Network: Ethernet
- Program Language: C++
- Number of Terminals: 3 to 32
- PC to PLC Communications: Fieldbus
- UPS Provision: Standard
- Server Operating System: Windows-NT 4.0 or QNX
- Client Operating System: Windows - NT4.0
Windows 95 / 98

ADVANCED PRODCUTION COMPUTER SYSTEM CORRUGATED PLANT CIM SCHEME

